

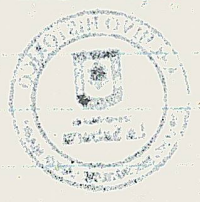
Varandillas del Jardín

	Espacio	Balaustré	Espacio	Balaustré	Espacio	Balaustré	Espacio	Balaustré	Espacio	Balaustré	Espacio	Balaustré	Espacio	Balaustré	Espacio	Balaustré	Espacio	Balaustré
--	---------	-----------	---------	-----------	---------	-----------	---------	-----------	---------	-----------	---------	-----------	---------	-----------	---------	-----------	---------	-----------

1. campo	2 ^{mo} 2	23	12	24	12	24	12	24	12	24	12	24	12	23				5		
2. "	2, 94	12	12	24	12	24	12	24	12	24	12	24	12	24	12	24	12	15	8	
3. "	2, 82	9	12	24	12	24	12	24	12	24	12	24	12	24	12	24	12	9	8	
4. "	2, 89	12½	12	24	12	24	12	24	12	24	12	24	12	24	12	24	12	12½	8	
5. "	2, 90	13	12	24	12	24	12	24	12	24	12	24	12	24	12	24	12	13	8	
6. "	3, 53	22½	12	24	12	24	12	24	12	24	12	24	12	24	12	24	12	24	22½	9
7. "	2, 63	12½	12	24	12	24	12	24	12	24	12	24	12	24	12	24	12	12½	7	
8. "	2, 64	18	12	24	12	24	12	24	12	24	12	24	12	24	12	24	12	18	7	
9. "	2, 32	7½	12	24	12	24	12	24	12	24	12	24	12	24	12	24	12	7½	7	
10. "	2, 32	22	12	23	12	23	12	23	12	23	12	23	12	23	12	23	12	22	6	
11. "	1, 76	18	12	20	12	20	12	20	12	20	12	20	12	20	12	20	12	18	5	



Balaustrés 78



Varandillas del Patio interior

Distancias entre Pilar

y Pilari Varcos

Balustras 5 P }
espacio 4 } 4 Pilas

Nº	Distancia	P. Varco	Pulg.	Balustras	Varcos	Calculo	Resultado
1	1 ^{va}	24	60 1/2	6 B	x 5 = 30	7 esp. x 4 = 28	58
2	2 ^{da}	28	100	10	x 5 = 50	17 x 4 = 68	118
3	2 ^{da}	27 3/4	99 3/4	10	x 5 = 50	11 x 4 = 44	94
4	2 ^{da}	27 1/2	99 1/2	10	x 5 = 50	11 x 4 = 44	94
5	3 ^{ra}	32	144	16	x 5 = 80	17 x 3 3/4 = 63 3/4	143 3/4
6	2 ^{da}	30 1/2	102 1/2	11	x 5 = 55	12 x 4 = 48	103
7	2 ^{da}	31 1/4	103 1/4	11	x 5 = 55	12 x 4 = 48	103
8	3 ^{ra}	2 1/2	10 1/2	12	x 5 = 60	13 x 3 3/4 = 48 3/4	108 3/4
9	2 ^{da}	23 1/2	95 1/2	10	x 5 = 50	11 x 4 = 44	94
10	3 ^{ra}	21 3/4	129 3/4	14	x 5 = 70	14 x 4 = 56	126
11	2 ^{da}	30 1/2	102 1/2	11	x 5 = 55	12 x 4 = 48	103
12							

137 - 56 = 81
 103
 1265

Se greda gruesas de Anillo
 de hierro de 25 mm
 en balustras de d. 19
 y en los postes de d. 25
 aproximadamente 9
 balustras



Varandillas del corredor interior

Distancias de Pilar a Pilar	en Varas	en Pulgada!	Balaustres 5 pulg. grueso		Espacios de 4 pulg. grueso		Total
1	2 - 24 1/2	60 1/2	6x5	30	7x4	28	58
2	2 - 28	100	6x5	50	11x4	44	94
3	2 - 27 3/4	99 3/4	6x5	50	11x4	44	94
4	2 - 27 1/2	99 1/2	6x5	50	11x4	44	94
5	4 - ..	144	6x5	80	17x3 3/4	63 3/4	143 3/4
6	3 - 32	140	6x5	80	17x3 1/2	59 1/2	139 1/2
7	2 - 30 1/2	102 1/2	11x5	55	12x4	48	103
8	2 - 31 1/4	103 1/4	11x5	55	12x4	48	103
9	3 - 2 1/2	110 1/2	12x5	60	13x3 3/4	48 3/4	108 3/4
10	2 - 23 1/2	95 1/2	10x5	50	11x4	44	94
11	3 - 21 3/4	129 3/4	14x5	70	15x4	60	130
12	2 - 30 1/2	102 1/2	11x5	55	12x4	48	103
		1287 3/4					1265

137 B. a 3" \$.51" 3" 8/10.

Piezas gruesas de Amarillo

9 - P. junto - 45 varas -

En Balaustres de a 18 1/2

pulgada de fuste - don

aproximadamente 90

Balaustres

90

Falta madera gruesa p^a - 47. B.

Balaustre {
 Coronilla - 1/2
 Fuste - 18 1/2
 Base cuadr. 1
 20 Pulg.



Journal of the ...

Year	Month	Day	Temperature	Wind	Humidity	Notes
1881	Jan	1	30	NW	75%	Clear
1881	Jan	2	30	NW	75%	Clear
1881	Jan	3	30	NW	75%	Clear
1881	Jan	4	30	NW	75%	Clear
1881	Jan	5	30	NW	75%	Clear
1881	Jan	6	30	NW	75%	Clear
1881	Jan	7	30	NW	75%	Clear
1881	Jan	8	30	NW	75%	Clear
1881	Jan	9	30	NW	75%	Clear
1881	Jan	10	30	NW	75%	Clear
1881	Jan	11	30	NW	75%	Clear
1881	Jan	12	30	NW	75%	Clear
1881	Jan	13	30	NW	75%	Clear
1881	Jan	14	30	NW	75%	Clear
1881	Jan	15	30	NW	75%	Clear
1881	Jan	16	30	NW	75%	Clear
1881	Jan	17	30	NW	75%	Clear
1881	Jan	18	30	NW	75%	Clear
1881	Jan	19	30	NW	75%	Clear
1881	Jan	20	30	NW	75%	Clear
1881	Jan	21	30	NW	75%	Clear
1881	Jan	22	30	NW	75%	Clear
1881	Jan	23	30	NW	75%	Clear
1881	Jan	24	30	NW	75%	Clear
1881	Jan	25	30	NW	75%	Clear
1881	Jan	26	30	NW	75%	Clear
1881	Jan	27	30	NW	75%	Clear
1881	Jan	28	30	NW	75%	Clear
1881	Jan	29	30	NW	75%	Clear
1881	Jan	30	30	NW	75%	Clear

1881

1881

1881

Journal of the ...



Journal of the ...

Varandillas

Balaustras 2A

espacios

<u>Patio principal</u>		<u>Metros</u>	<u>Varas</u>	<u>Pulgad.</u> ¹	<u>6 pulgad.</u> ⁵	<u>9 pulgadas</u>
1	Largo	2 02	"	3 21 $\frac{1}{2}$	" 22	14
2	"	2 94	"	3 16 $\frac{1}{2}$	" 21	14
3	"	2 82	"	3 11 $\frac{1}{2}$	" 20	13
4	"	2 89	"	3 14 $\frac{1}{2}$	" 20	13
5	"	2 90	"	3 14 $\frac{3}{4}$	" 20	13
6	"	3 53	"	4 5 $\frac{1}{2}$	" 30	17
7	"	2 68	"	3 3 $\frac{1}{2}$	" 18	12
8	"	2 64	"	3 3 $\frac{3}{4}$	" 18	12
9	"	2 42	"	2 30 $\frac{1}{2}$	" 17	11
10	"	2 32	"	2 26	" 16	11
11	"	1 76	"	2 2 $\frac{1}{2}$	" 12	9
					214	139

Patio int.^{er}

1	Largo	1 43	"	1 24 $\frac{1}{2}$	" 10	6
2	"	2 48	"	2 28	" 16	11
3	"	2 47	"	2 27 $\frac{3}{4}$	" 16	11
4	"	2 46	"	2 27 $\frac{1}{2}$	" 16	11
5	"	3 38	"	4 . .	" 24	16
6	"	3 31	"	3 32	" 23	16
7	"	2 42	"	2 30 $\frac{1}{2}$	" 17	11
8	"	2 44	"	2 31 $\frac{1}{4}$	" 17	11
9	"	2 61	"	3 0 2 $\frac{1}{2}$	" 18	12
10	"	2 25	"	2 23 $\frac{1}{2}$	" 16	11
11	"	3 02	"	3 21 $\frac{3}{4}$	" 22	14
12	"	2 42	"	2 30 $\frac{1}{2}$	" 17	11
Escalera	"	4 57	"	5 13 $\frac{1}{2}$	" 32	22
idem	"	1 75	"	2 02	" 12	9
					256	172



Journal of the ...

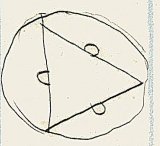
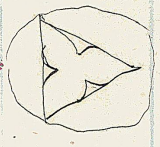
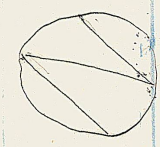
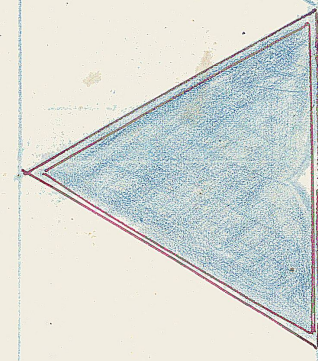
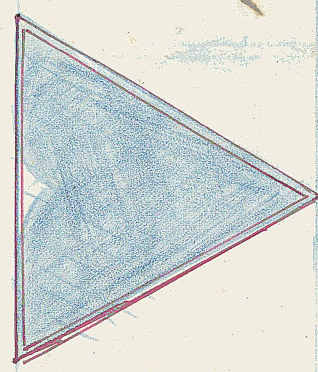
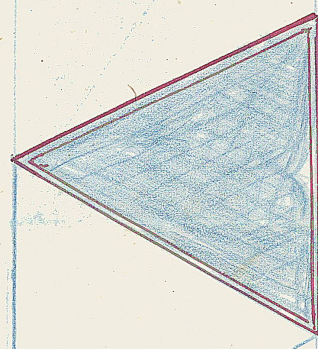
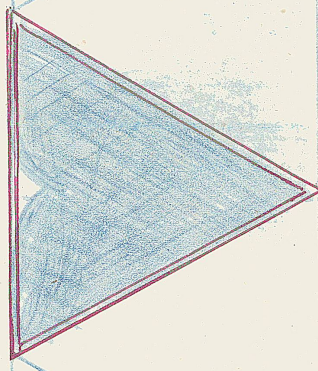
<i>Date</i>	<i>Particulars</i>	<i>Debit</i>	<i>Credit</i>	<i>Balance</i>
1870				
1871				
1872				
1873				
1874				
1875				
1876				
1877				
1878				
1879				
1880				
1881				
1882				
1883				
1884				
1885				
1886				
1887				
1888				
1889				
1890				
1891				
1892				
1893				
1894				
1895				
1896				
1897				
1898				
1899				
1900				

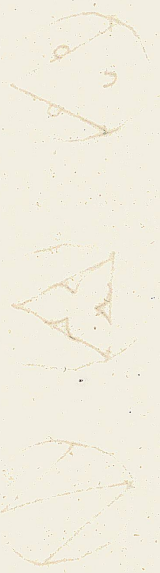
Journal of the ...

<i>Date</i>	<i>Particulars</i>	<i>Debit</i>	<i>Credit</i>	<i>Balance</i>
1870				
1871				
1872				
1873				
1874				
1875				
1876				
1877				
1878				
1879				
1880				
1881				
1882				
1883				
1884				
1885				
1886				
1887				
1888				
1889				
1890				
1891				
1892				
1893				
1894				
1895				
1896				
1897				
1898				
1899				
1900				

Triángulos en triángulo
equilátero - Base 3 pulgadas

Menor 5 pulgadas
de grueso





Faint handwritten text, possibly bleed-through from the reverse side of the page.

Patio interior

Esparnis

Metros	Varas	Pulg.	Esparnis		120
			6 Pulg.	9 pulgs	
1 — 1 ^m , 43	" 1, 24 $\frac{1}{2}$		10	6	5
2 — 2, 48	" 2, 28 $\frac{1}{2}$		16	11	8
3 — 2, 47	" 2, 27 $\frac{3}{4}$		16	11	8
4 — 2, 46	" 2, 27 $\frac{1}{2}$		16	11	8
5 — 3, 38	" 4, 00		24	16	12
6 — 3, 31	" 3, 32 $\frac{1}{2}$		23	16	12
7 — 2, 42	" 2, 30 $\frac{1}{2}$		17	11	8
8 — 2, 44	" 2, 30 $\frac{1}{4}$		17	11	8
9 — 2, 61	" 3, 02 $\frac{1}{2}$		18	12	9
10 — 2, 25	" 2, 23 $\frac{1}{2}$		16	11	8
11 — 3, 02	" 3, 26 $\frac{3}{4}$		22	14	11
12 — 2, 42	" 2, 30 $\frac{1}{2}$		17	11	8
Escalera — 4, 57	" 5, 13 $\frac{1}{2}$		32	22	15
W. — 1, 75	" 2, 02		12	9	6
			<u>256</u>	<u>172</u>	<u>126</u>

Patio principal

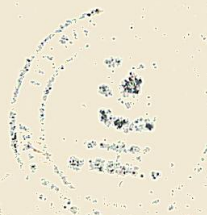
Balustras ⁴⁷² 378

	Metros	Varas	Balustras		120
			6 pulgs	9 Pulgs	
1	2 ^m , 02	" 3, 21 $\frac{1}{4}$	22	14	8
2	2, 94	" 3, 16 $\frac{1}{2}$	21	14	12
3	2, 82	" 3, 11 $\frac{1}{2}$	20	13	11
4	2, 89	" 3, 14 $\frac{1}{2}$	20	13	12
5	2, 90	" 3, 14 $\frac{3}{4}$	20	13	12
* 6	3, 53	" 4, 5 $\frac{1}{2}$	30	17	15
7	2, 63	" 3, 3 $\frac{1}{2}$	18	12	11
8	2, 64	" 3, 3 $\frac{3}{4}$	18	12	11
9	2, 42	" 2, 30 $\frac{1}{2}$	17	11	10
10	2, 32	" 2, 26	16	11	10
11	1, 76	" 2, 02 $\frac{1}{2}$	12	9	7
			<u>214</u>	<u>139</u>	<u>119</u>



Jarandillas
Culculo parales
Bulaustru

[Faint handwritten notes and numbers, possibly bleed-through from the reverse side.]



[Faint handwritten notes and numbers, possibly bleed-through from the reverse side.]